

**The Next Generation  
of the Premiere  
Crime Scene  
Forensic Light Source**



**Rugged, Lightweight,  
and Portable**



**Smaller, Lighter,  
Brighter**

**Extreme Reliability — Unmatched Ease of Use**

***Mini-CrimeScope  
Advance***

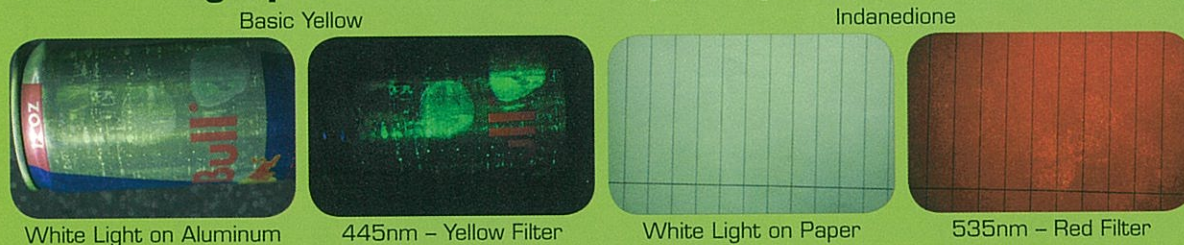


**The Mini-CrimeScope® Advance is the culmination of all of our knowledge and expertise in the design of crime scene forensic light sources. Smaller, Lighter, Brighter the Mini-CrimeScope® Advance represents the latest in bulb based Forensic Light Source Technology.**

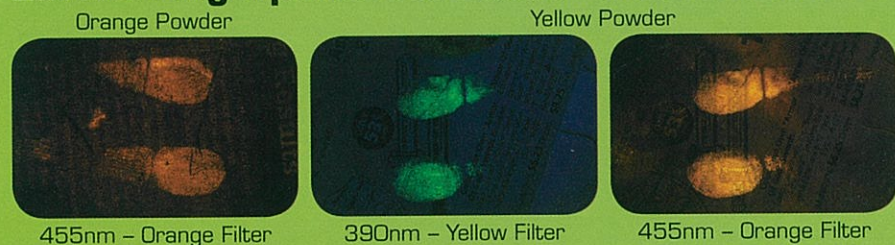
Building on the experience of more than 20 years of manufacturing Forensic Light Sources, the Mini-CrimeScope® Advance incorporates the same ease of use and unmatched reliability of its predecessor, along with the latest in arc lamp technology to provide a unit that is unsurpassed in performance.

## Applications

### Latent Fingerprint Detection – Liquid Dyes



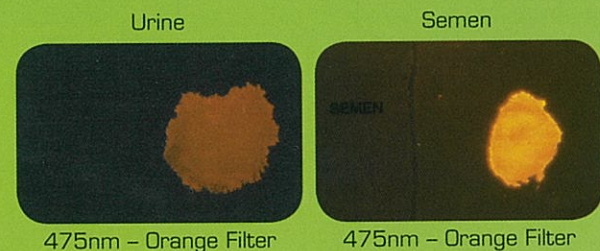
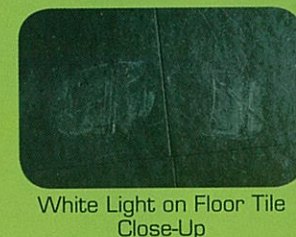
### Latent Fingerprint Detection – Fluorescent Powder



### Shoe Impressions



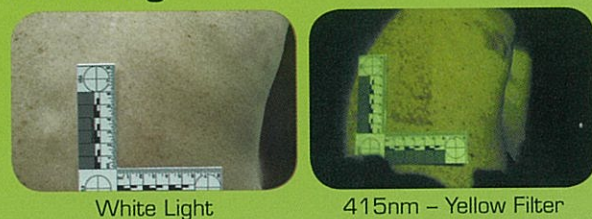
### Body Fluids – Serology



### Trace Evidence – Hairs & Fibers



### Bruising



### Bone Fragments





# Features

## Power

The Mini-CrimeScope® Advance is the brightest bulb based forensic light source on the market. Utilizing new bulb technology, as well as new high throughput, high durability interference filters, it produces more light than the current Mini-CrimeScope® 400. Intensity and power allow for better sensitivity; helping to find the faintest of evidence.

**The Mini-CrimeScope® Advance is brighter than any handheld light source on the market, bar none!**

## Ease of Use

The MCS-ADV features a patented filter wheel at the working end of the liquid light guide. To switch a filter the user need only “flick a thumb” on the hand that is directing the light guide. No other manufacturer can make this claim. When using any alternate light source, 2 features are critical, light intensity and wavelength selection. The Mini-CrimeScope® Advance provides very high light intensity in a round uniform spot that is easily controlled, allowing the user to maximize how much light falls onto the evidence. The more light that falls on the evidence, the brighter the fluorescence.

The Mini-CrimeScope® Advance provides multiple wavelengths and the easiest way to switch them. Multiple wavelengths are critical in rejecting background/fluorescence. The evidence you are looking for generally fluoresces while being excited at most wavelengths of the spectrum. When you have a background that also fluoresces, multiple wavelengths allows the user to select the ideal wavelength to allow for rejection of the background, maximizing contrast.



Up to 15 wavelengths in one rugged filterwheel

## Upgradeability

To continue to be the top of the line forensic light source, the unit must be useful today and tomorrow. With this as the rule, the Mini-CrimeScope® Advance was designed to be upgradeable. Additional filter wheels can be added any time.

## Portability

Lighter weight than all other forensic light sources in its class, the Mini-CrimeScope® Advance is the brightest choice for all your crime scenes. Now you will finally be able to bring laboratory intensity into the field; the MCS-ADV is transported in a rigid, padded case that easily travels. The new case is also convertible into a backpack. The Mini-CrimeScope® Advance is designed specifically to travel.



The unit and all its components with its convertible carry case



## Specifications

Each Mini-CrimeScope® Advance includes the following:

- Rugged portable main unit with fold down handle and front control panel with intensity adjustment knob
- 10mm active diameter Liquid Light Guide (6 feet long) with dual armor plate
- 1 remote interchangeable thumbwheel (patented) with built in collimator. Includes either 8 or 15 wavelengths in a protective housing. See Below.
- 4 pairs of goggles: 1 UV protection, 1 yellow, 1 orange, and 1 red
- Carry Case convertible to "Back Pack" configuration



Choose either one or two filterwheels in one easy to use assembly.

## Technical Specifications

- Type of lamp: Hybrid Gas Discharge Lamp
- Life Time: 2000 hours
- Weight: Main Unit 11lbs. Packed with all components and including case 24lbs.

## AC Electrical Specifications

Input Voltage: 85 – 250 VAC Input Current 3A Max  
Input Frequency 50 – 60 Hz  
Operating Temperature Range T 15 – 40 °C  
Warranty: One Year on Parts and Labor  
System is manufactured under ISO 9001 standards

## Wavelength Specifications:

The Mini-CrimeScope® Advance is the most versatile forensic light source, with the choice of 8 or 15 wavelengths, all within a single handheld filter wheel mounted at the working end of the liquid light guide, providing even greater ease of use than the original Mini-CrimeScope®.

The MCS-ADV-15F contains:

- 1 remote interchangeable thumbwheel (patented) with built in collimator. Includes the following wavelengths in a protective housing: 365(UV), 390, 415, 445, 455, 475, 495, CSS, 515, 535, 555, SP575, 575, 600, WHITE

The MCS-ADV-8F contains:

- 1 remote interchangeable thumbwheel (patented) with built in collimator. Includes the following wavelengths in a protective housing: 365(UV), 415, 455, CSS, 515, 535, 555, WHITE

**SPEX Forensics**

**A division of HORIBA Instruments Inc.**

**3880 Park Ave, Edison, NJ 08820**

**800.GET.SPEX**

**spexforensics.com**

**The Mini-CrimeScope® Advance represents the latest in the evolution of crime scene forensic light sources.**

The first Mini-CrimeScope® was completed and shipped on November 8, 1994. It had a part number of Mini-CS-10 and stood apart from its competitors at the time by putting the control of wavelength selection in the hand of the user. Back then, ease of use was a new approach, today it is the standard for the use of alternate and forensic light sources.

The Mini-CS-10 sold for 2 years before the debut of what would become the premier crime scene forensic light source. The Mini-CrimeScope® 400 was first shipped on September 15, 1996. Incorporating a 400W metal halide bulb, it was the first unit to offer a choice of wavelength configurations based upon the

requirements of the agency using the unit. First 2, then later up to 4 wavelength configurations are available, all with the filters being housed in rugged hand-held filterwheels. Combined with a 10mm Liquid light guide, the MCS-400 became the workhorse for countless departments around the world.

In 2012, the best got even better. The introduction of the Mini-CrimeScope® Advance represents the latest in the evolution of crime scene forensic light sources. The latest bulb technology, coupled with everything we have learned over the years, results in the most powerful, most versatile forensic light source ever offered.



[www.spexforensics.com/advance](http://www.spexforensics.com/advance)

**HORIBA**  
Scientific